

## Laptop Display Mounted Diversity Pair

Internal Antenna - Embedded

Part Numbers:

**CAF28961**

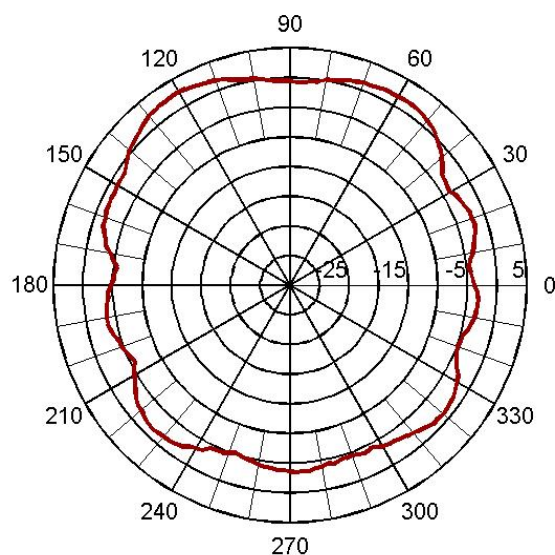
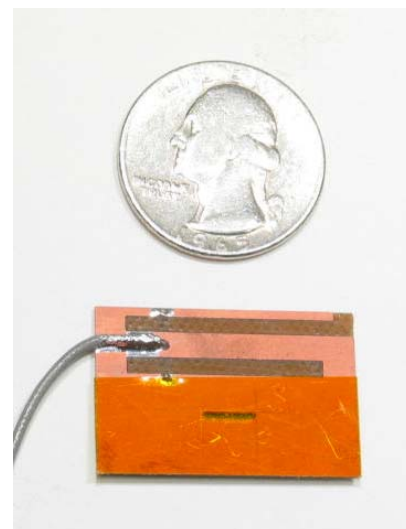
**CAF28962**

### Electrical Specifications:

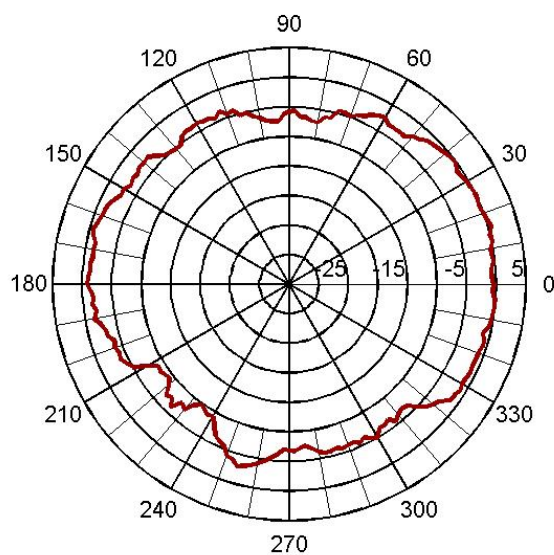
<b>Frequency</b>	2.4 - 2.5 GHz 4.9 - 5.875 GHz	
<b>Average Gain</b> (Azimuth)	> -3 dBi	2.4-2.5 GHz
	> -5 dBi	4.9 - 5.875 GHz
<b>VSWR</b>	2:1 from 2.4-2.5 GHz & 4.9-5.875 GHz	
<b>Isolation</b>	> 17 dB	2.4-2.5 GHz
	> 33 dB	4.9 - 5.875 GHz

### Mechanical Specifications:

<b>Dimensions</b>	30 mm x 20 mm x .5 mm (1.81 mm at cable)	
<b>Cable Length</b>	CAF28961	336 mm
	CAF28962	471 mm



**Azimuth**  
2.45 GHz



**Azimuth**  
5.485 GHz

Specifications subject to change without notice.

LDMDP-c - 12/20/04

## Laptop Display Mounted Diversity Pair

### Internal Antenna - Embedded

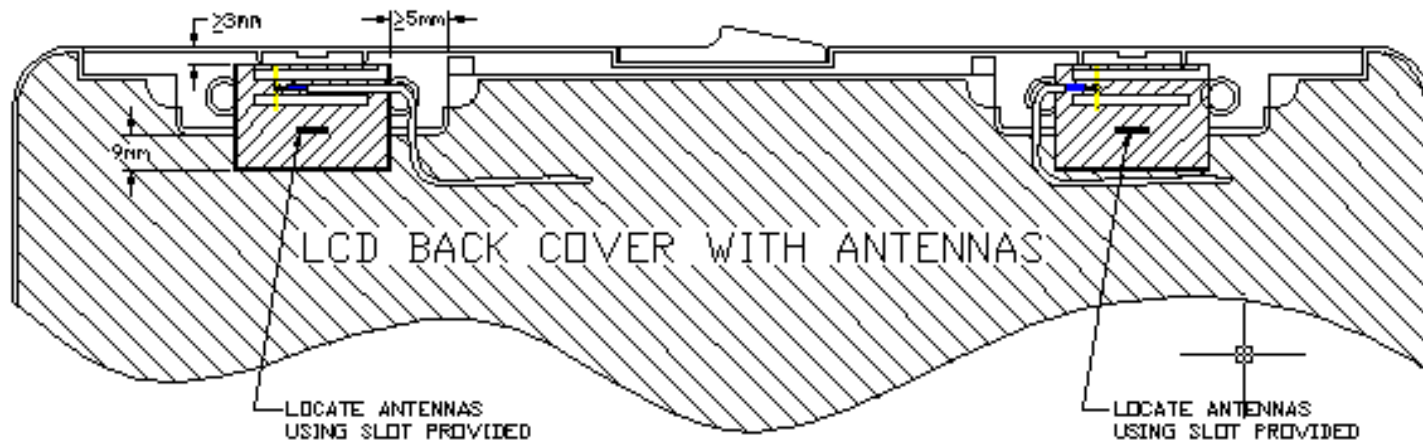
Part Numbers:

**CAF28961**

**CAF28962**

### Mounting:

Antenna is insensitive to cable routing due to common ground plane design.



KEEP DISTANCE FROM ANTENNA TO RADOME

≥ 2.5 mm FROM EACH FACE

### Installation:

The antenna is designed to operate within a dielectric radiation window (volume) in the top of a laptop computer.

This is illustrated in the specification sheet under mounting.

The areas which are cross-hatched in the specification sheet illustration are assumed to be metalization of some type, elsewhere is dielectric.

The specification sheet has an illustration of the approximate dimensions which one should maintain for the best potential antenna performance when mounting it in a laptop.

- The distance from the top of the antenna to the top of the notebook should be greater than or equal to 3mm.
- The distance from the antenna to the edge of the radiating window should be 5mm or greater.
- The distance from the bottom of the antenna to the bottom of the radiating window is 9mm.
- The distance from the either face of the antenna should be 2.5mm or greater.

Specifications subject to change without notice.

LDMDP-c - 12/20/04